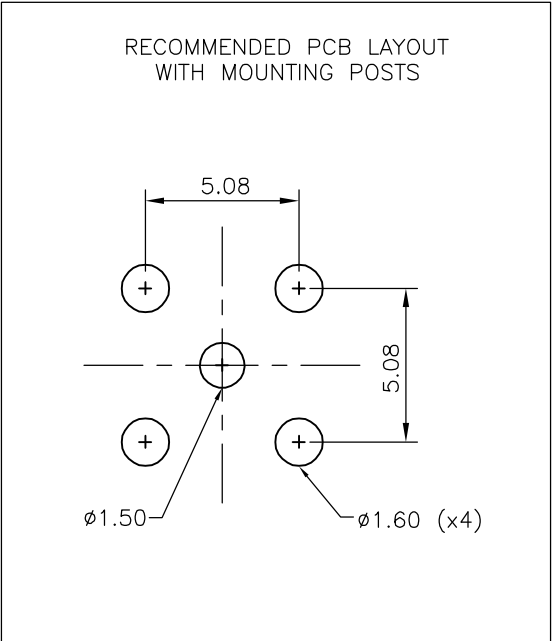
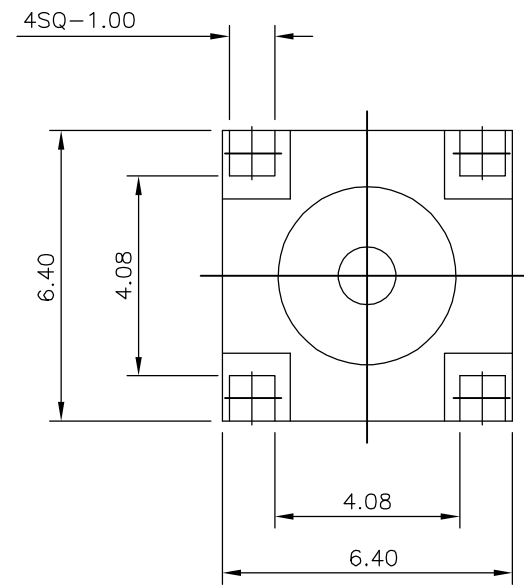
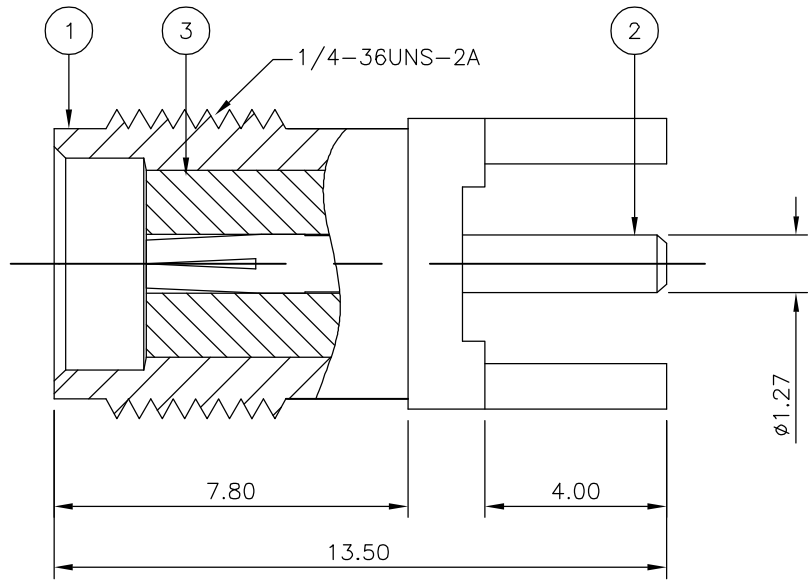


THIS DRAWING IS UNPUBLISHED. RELEASED FOR PUBLICATION JULY, 2006.  
 © COPYRIGHT 2006 BY TYCO ELECTRONICS CORPORATION. ALL RIGHTS RESERVED.

LOC	DIST	REVISIONS			
P	LTR	DESCRIPTION	DATE	DWN	APVD
E	B	A	FIRST ISSUE	31JUL06	JMS FWK

**NOTES**

- 1 SINGLE PACK IN ACCORDANCE WITH AMP SPEC 107-3275
- 2 100 TRAY PACK IN ACCORDANCE WITH AMP SPEC 107-3275
- 3 Au PLATING
- 4 ELECTRICAL CHARACTERISTICS  
 FREQUENCY RANGE: DC-3GHz  
 NOMINAL IMPEDANCE: 50 OHMS  
 INSULATION RESISTANCE: 5000 MOHMS  
 DIELECTRIC WITHSTAND VOLTAGE: 500V RMS  
 CONTACT RESISTANCE: CENTRE CONTACT 3 mOHMS  
 OUTER CONTACT 2 mOHMS
- 5 MECHANICAL CHARACTERISTICS  
 DURABILITY: 50 CYCLES  
 TORQUE SETTING: 0.15-0.20 NM



QTY	DESCRIPTION	MATERIAL	ITEM
1	INSULATOR	PTFE	3
1	SOCKET	PHOSPHOR BRONZE	2
1	BODY	ZINC ALLOY	1
5	MATERIAL		15

THIS DRAWING IS A CONTROLLED DOCUMENT.		DWN J.SANDWELL 31JUL06	Tyco Electronics Corporation Bideford EX39 4HE	
DIMENSIONS: mm		CHK S.PARLOW 31JUL06		
TOLERANCES UNLESS OTHERWISE SPECIFIED:		APVD F.WHEELER-KING 31JUL06	NAME SMA STRAIGHT PCB SOCKET DIE CAST	
0 PLC ± -		PRODUCT SPEC	SIZE	
1 PLC ± -		APPLICATION SPEC	CAGE CODE	
2 PLC ± -		WEIGHT	DRAWING NO	
3 PLC ± -		CUSTOMER DRAWING	RESTRICTED TO	
4 PLC ± -			SCALE NTS	
ANGLES ± -		SHEET 1 OF 1		
FINISH		REV A		
MATERIAL SEE TABLE		A3 00779 C-1814832		